

FLYNN CENTER

MAINSTAGE

TECHNICAL INFORMATION

2017-2018 SEASON



153 MAIN STREET
BURLINGTON, VERMONT 05401-8402
(802-652-4500)

CONTENTS

<u>SECTION</u>	<u>PAGE</u>
A. GENERAL INFORMATION	3
B. STAGE SPECIFICATIONS	4
C. LOADING DOCK AND PARKING	5
D. RIGGING AND LINE PLOT	6
E. SOFT GOODS	7
F. ELECTRICAL AND LIGHTING	7-10
G. SOUND: AUDIO EQUIPMENT AND INTERCOM	11-13
H. VIDEO: VIDEO & PROJECTION EQUIPMENT.....	13
I. DRESSING ROOMS AND PERFORMER SUPPORT	14
J. LOCAL SERVICES and INFO	15
K. DIAGRAMS	
1. GROUND PLAN.....	16
2. THEATER SECTION.....	17
3. THEATER SEATING MANFIEST	18
L. BURLINGTON CITY MAP/ DIRECTIONS.....	19

A. – GENERAL INFORMATION:

THE FLYNN CENTER IS AN ART DECO STYLE PROSCENIUM HALL BUILT IN 1930. THE HALL, STAGE, AND PERFORMER SUPPORT AREAS HAVE BEEN RECENTLY RENOVATED THE HOUSE HAS A TOTAL SEATING CAPACITY OF 1453.

(1141 ORCHESTRA AND 312 BALCONY)

THE THEATRE IS LOCATED ON MAIN STREET IN DOWNTOWN BURLINGTON, VERMONT. THE LOADING DOCK/ACCESS TO STAGE IS OFF LOWER CHURCH & KING STREETS AND IS ACCESSIBLE FROM EXIT 14-W FROM I-89 OR VIA VERMONT ROUTE 7. DIRECTIONS AND DIAGRAMMS ARE INCLUDED AT THE REAR OF THIS PACKET. THE THEATER LOADING AREA CAN ACCOMMODATE TWO 48' TRUCKS OR ONE BUS AND ONE TRUCK.

THE "STANDARD" OR "HOUSE" POSITION OF SOFT GOODS AND ELECTRICS (INDICATED IN SECTION D) CAN BE RECONFIGURED WITH ADVANCE NOTICE, IF THEATRE'S SCHEDULE AND CREW TIME ALLOWS.

VT. FIRE SAFETY REGULATIONS MANDATE: THE USE OF PYROTECHNIC DEVICES OR FIREWORKS IN A PUBLIC BUILDING IS STRICTLY PROHIBITED, ABSENT THR EXPRESS WRITTEN CONSENT OF THE COMMISSIONER OF LABOR AND INDUSTRY AND THE CHIEF OF THE LOCAL FIRE DEPT.

THE FLYNN CENTER OPERATES UNDER A CONTRACT WITH L.A.T.S.E. LOCAL #919 REGARDING ALL STAGE LABOR TO BE EMPLOYED IN THE HALL.

THE FLYNN CENTER IS A SMOKE FREE ENVIRONMENT AND NO SMOKING IS PERMITTED ANYWHERE IN THE BUILDING

IMPORTANT PHONE NUMBERS

DIRECTOR OF PROGRAMMING:	STEVE MAQUEEN	802/652-4503
PROGRAMMING MANAGER:	CHELSEA COCKRELL	802/652-4502
FACILITIES DIRECTOR:	JACK GALT	802/652-4520
PRODUCTION DIRECTOR:	ERIC DURETT	802/652-4521
TECHNICAL DIRECTOR:	GRANT ORENSTEIN	802/652-4535
HOUSE CARPENTER:	BRUCE PALUMBO	802/652-4523
HOUSE ELECTRICIAN:	PETE CURTIS	802/652-4524
HOUSE SOUND:	COLIN FLETCHER	802-999-0636
BACKSTAGE PHONE:		802/652-4522
MANAGEMENT FAX:		802/863-8788
FLYNN PRODUCTION FAX:		802/863-9962
SHOW PRODUCTION/GREEN ROOM:		802/652-4529
SHOW FAX/GREEN ROOM FAX:		802/652-4530
SHOW/CROSSOVER:		802/652-4541
BOX OFFICE:		802/652-4777
PRODUCTION E-MAIL:		

edurett@flynncenter.org
gorenstein@flynncenter.org

B. – STAGE SPECIFICATIONS

FACILITY DIMENSIONS

PROSCENIUM HEIGHT – 29'-0"
PROSCENIUM WIDTH – 48'-0"
TOTAL STAGE WIDTH – 82'-0"
PLASTER LINE TO BACK WALL – 24'-6"
CURTAIN LINE TO BACK WALL – 22'-6"
APRON TO BACK WALL – 31'-6"
ORCHESTRA LIFT TO BACK WALL – 38'-6"
ORCHESTRA LIFT DEPTH AT CENTER – 7'-0"
ORCHESTRA LIFT DEPTH AT END – 4'-5"
SL WING SPACE (FROM PROSCENIUM TO SIDE WALL) – 18'-0"
SR WING SPACE (FROM PROSCENIUM TO FLY RAIL) – 15'-0"
GRID HEIGHT – 55'-0"
LOADING DOOR – 6'- 4" WIDE BY 8'11" HIGH
DOOR TO WAREHOUSE – 5'-8" WIDE BY 9'-0" HIGH
DOOR TO CONNECTOR – 5'-8" WIDE BY 12'-0" HIGH

THERE IS A CATWALK ABOVE THE FLY RAIL SR; THE BOTTOM OF THE CATWALK IS 10' ABOVE STAGE LEVEL WITH A 4' HIGH RAILING. THE CATWALK EXTENDS 3' – 3" ONSTAGE FROM THE FLY RAIL. THE DOWNSTAGE PORTION EXTENDS ANOTHER 3' ONSTAGE FROM THE PLASTER LINE UPSTAGE FOR 5' – 6".

THERE IS PLENTY OF UNHEATED STORAGE FOR ROAD CASES AND EQUIPMENT IN A LARGE WAREHOUSE OFF STAGE LEFT.

THE STAGE FLOOR IS A SPRUNG SOFT WOOD T&G WITH A MULTI DENSITY FIBERBOARD COVER THAT IS PAINTED BLACK. THE GENERAL CONDITION IS QUITE GOOD. THE STAGE HEIGHT IS 3'-6" ABOVE FIRST ROW OF AUDIENCE SEATING.

**THERE IS A PORTABLE HARLEQUIN VINYL DANCE FLOOR AVAILABLE.
(50' x 30' BLACK AND WHITE – REVERSIBLE) THIS HAS BEEN CUT TO FIT THE APRON.**

THERE IS A CROSS OVER UPSTAGE OF THE BACK WALL.

THE ORCHESTRA PIT (WITH THE LIFT LOWERED) IS 41'-0" WIDE AND 13'-6" DEEP AT CENTER, TAPERING TO 9'-0" ON THE SIDES FOLLOWING THE CURVE ON THE DOWN STAGE EDGE. TOTAL SQUARE FOOTAGE IS ABOUT 450'. THE FLOOR IS 8'-0" BELOW STAGE LEVEL.

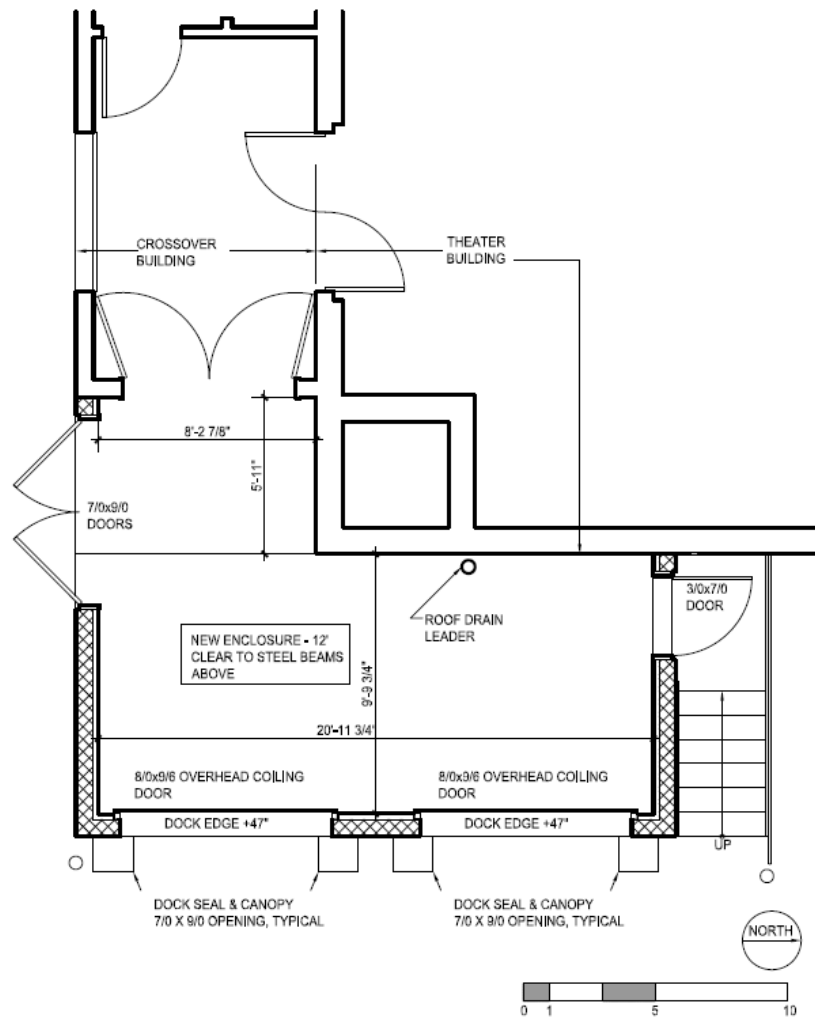
C. – LOADING DOCK

THE LOADING DOCK CAN ACCOMMODATE TWO 53' TRACTOR TRAILERS SIDE BY SIDE. IF ADDITIONAL PARKING IS REQUIRED PLEASE CONTACT THE FLYNN PRODUCTION MANAGER. SOME STREET PARKING CAN BE ARRANGED WITH ENOUGH ADVANCED NOTICE. THE MAIN LOADING DOCK IS 4'-4" ABOVE GRADE AND IS AT STAGE LEVEL. THE MAIN DOCK IS A CEMENT PLATFORM AT STAGE LEVEL. THERE IS ALSO A DROP DOWN DOCK AS NOTED ON THE DRAWING BELOW. IT MEASURES 9'-6" WIDE BY 8'-6" DEEP AND IS 5'-0" ABOVE GRADE. THERE IS A 90 DEGREE TURN FROM BOTH DOCKS TO GET ONTO STAGE VIA UP RIGHT. THIS IS ONLY A PROBLEM WITH VERY LARGE SCENERY OR ROAD CASES. IF IN DOUBT PLEASE CALL THE FLYNN PRODUCTION MANAGER.

2-208 VOLT 1-PHASE 50 AMP 4 WIRE RANGE TYPE AND

2-120 VOLT GFI CONVENIENCE OUTLETS ARE AVAILABLE IN THE DOCK AREA. 2 STEEL DOCK PLATES AND FOUR 4-WHEEL WOODEN DOLLIES ARE AVAILABLE. AS THIS IS A MUTLI-USER PARKING LOT WE MUST POST ALL TRUCK/BUS ARRIVAL TIMES. PLEASE LET US KNOW WHEN YOUR TRUCK OR BUS IS PLANNING TO ARRIVE AND WE WILL HAVE THE AREA CLEAR.

TRUCKS AND BUSES CANNOT BE LEFT RUNNING AT THE DOCK.



Flynn Loading Dock Plan
for Tech specs 7/13/11

Scale 1/4" = 1'-0"

D. RIGGING AND LINESET PLOT:

THE FLY SYSTEM AT THE FLYNN CONSISTS OF 23 LINE SETS. ALL LINES HAVE A 900 POUND CAPACITY ON A SINGLE PURCHASE COUNTER WEIGHT SYSTEM. THE HOUSE HAS 10,000 POUNDS OF STAGE WEIGHT. IF ADDITIONAL CAPACITY IT NEEDED PLEASE CONTACT US TO DISCUSS POSSIBILITIES. ALL BATTENS ARE 60' LONG AND 1-1/2" ID BATTEN RATED PIPE WITH SIX PICKUPS PER PIPE. THE MAXIMUM OUT TRIM OF LINES 1-18 IS 52'-6" AND LINES 19-23 IS 51'-4". IF A FOH TRUSS IS USED THE MAX OUT TRIM IS 27'-4" TO BOTTOM POINT. THE FLY RAIL IS LOCATED STAGE RIGHT. THE GRID IS STEEL WITH THE BLOCKS ON TOP. THE MAIN CURTAIN IS A MANUALLY OPERATED RED VELOUR TRAVELER OR GUILLOTINE OPERATED FROM STAGE RIGHT. MAIN CURTAIN MAX OUT TRIM IS 22'. THE MAIN VALANCE IS A DECORATIVE AUSTRIAN VELOUR THAT IS ADJUSTABLE IN HEIGHT ON LINESET ONE- WITH BLACK LEGS(REMOVABLE).

THE FOLLOWING LINESET PLOT IS CONSIDERED THE HOUSE PLOT.
PLEASE LET US KNOW IN ADVANCE IF YOU PLAN TO ALTER IT.

LINESET PLOT:

<u>LINE #</u>	<u>DISTANCE FROM PL.</u>	<u>HOUSE USE</u>
---	0'-0"	FIRE CURTAIN
#1	1'-7"	AUSTRIAN VALANCE
#1A	2'-10"	MAIN DRAPE
#2	3'-10"	ELECTRIC #1
#3	4'-8"	OPEN LINESET
#4	5'-6"	OPEN LINESET
#5	6'-6"	BLACK BORDER
#6	7'-0"	BLACK LEGS
#7	8'-0"	OPEN LINESET
#8	8'-10"	ELECTRIC #2
#9	9'-10"	OPEN LINESET
#10	10'-7"	OPEN LINESET
#11	11'-4"	BLACK BORDER
#12	12'-2	SPLIT BLACK/BLACK LEGS
#13	13'-6"	OPEN LINESET
#14	14'-6"	ELECTRIC #3
#15	16'-2"	OPEN LINESET
#16	17'-2"	BLACK BORDER
#17	17'-10"	BLACK LEGS
#18	19'-2"	ELECTRIC #4
#19	20'-11"	OPEN LINESET
#20	21'-6"	OPEN LINESET
#21	22'-2"	OPEN LINESET
#22	22'-10"	OPEN LINESET
#23	23'-5"	FULL STAGE BLACK/CYC

E. – SOFT GOODS:

STAGE DRAPERIES:

4 BLACK VELOUR BORDERS 10'H X 60'W
4 SETS BLACK VELOUR LEGS 30'H X 18'W
2 FULL STAGE BLACK VELOURS 25'H X 50'W
1 BLACK SCRIM 25'H X 50'W
1 WHITE SCRIM 25'H X 50'W
1 SEAMLESS WHITE CYC 25'H X 50'W
1 WHITE BOUNCE DROP 25'H X 50'W

ALL DRAPES ARE FLAT PANNELS WITH NO FULLNESS SEWN IN.
ASSORTED ZETEX BORDERS ARE AVAILABLE.

F. – ELECTRICAL AND LIGHTING:

COMPANY SWITCHES: - AUXILLARY POWER HOOKUPS:

2-400 AMP 3 PHASE, 5 WIRE DISCONNECT PANEL LOCATED AT STAGE LEVEL DOWN STAGE RIGHT

2-100 AMP 3 PHASE, AUDIO POWER – 5 WIRE 2/0 FLUSH MONUT CAMLOCKS LOCATED STAGE LEVEL DOWN STAGE RIGHT, AND DOWN STAGE LEFT.

100 AMP 3 PHASE, WITH 2-50 AMP RANGE PLUGS AND A 110 G.F.I. OUTLET LOCATED OUTSIDE THE BUILDING AT THE LOADING DOCK FOR BUS SHORE POWER.

50 AMP 3 PHASE, 4 WIRE, NON NEMA, TWIST LOCK RECEPTACLE- MOTOR POWER.

4 EDISON 20 AMP SWITCHED NONDIM CIRCUITS LOCATED AT STAGE LEVEL DOWN STAGE RIGHT

6 EDISON U-GROUND 20 AMP CIRCUITS, 2 LOCATED STAGE RIGHT, 1 LOCATED ON THE UPSTAGE WALL, AND 3 IN THE ORCHESTRA PIT.

FLYNN PERSONNEL WILL TIE IN ALL POWER AS NEEDED. THE HOUSE DOES NOT SUPPLY FEEDER CABLE UNLESS PREVIOUS ARRANGEMENTS HAVE BEEN MADE.

ANY ELECTRICAL EQUIPMENT BROUGHT INTO THE FLYNN MUST MEET ALL CURRENT ELECTRICAL CODES.

STAGE LIGHTING CONTROL:

LIGHTING CONTROL CONSOLE: ETC ION 1500 CHANELS, W 2-2X20 WINGS, 80 FADERS.

THE LIGHT BOARD IS LOCATED IN THE LIGHTING BOOTH AT THE REAR OF THE BALCONY. A REMOTE FOCUS UNIT WITH MONITORS IS AVAILABLE AS WELL AS A REMOTE VIDEO INTERFACE W/ MONITOR FOR TECH. TABLE.

A TOTAL OF 274 2.4 KW ETC SENSOR DIMMERS ARE AVAILABLE FOR STAGE USE.

HOUSE LIGHTS:

HOUSE LIGHTS ARE CONTROLLED BY 10-6 KW SENSOR DIMMERS IN RACK THREE AND CAN BE CONTROLLED BY THE LIGHT BOARD OR FROM CONTROLLERS LOCATED DOWN STAGE RIGHT AND IN THE BOOTH.

CIRCUIT/ DIMMER LAYOUT:

FIRST ELECTRIC:	36 CIRCUITS - #1- #36
SECOND ELECTRIC:	30 CIRCUITS - #37- #66
THIRD ELECTRIC:	30 CIRCUITS - #67- #96
FOURTH ELECTRIC:	18 CIRCUITS - #97- #114
SR CATWALK PANEL:	18 CIRCUITS - #115- #132
FIRST CEILING SLOT (NEAR):	18 CIRCUITS - #133- #150
SECOND CEILING SLOT (FAR):	36 CIRCUITS - #151- #186
BALCONY RAIL HR:	6 CIRCUITS - #265- #270
BALCONY RAIL HL:	6 CIRCUITS - #259- 264
HOUSE LEFT BOX BOOM:	12 CIRCUITS - #187- #198
HOUSE RIGHT BOX BOOM:	12 CIRCUITS - #199- #210
UPSTAGE WALL;	24 CIRCUITS - #211- #234
STAGE LEFT PROSCENIUM:	24 CIRCUITS - #235- #258
BOOTH RAIL	12 CIRCUIT-# 283-294
HOUSE LIGHTS:	10 DIMMERS - #273- #282

ALL STAGE CIRCUITS ARE 20 AMP 3 PIN STAGE CONNECTORS (2 P&G).

LIGHTING EQUIPMENT INVENTORY:

<u>QUANTITY</u>	<u>UNIT TYPE</u>	<u>WATTAGE</u>	<u>MANUFACTURER</u>
42-(FOH) 9-(DECK)	SOURCE 4 19 DEGREE	750 WT. 575 WT.	ETC
6-(FOH) 37-(DECK)	SOURCE 4 26 DEGREE	750 WT. 575 WT.	ETC
4-(FOH) 53-(DECK)	SOURCE 4 36 DEGREE	750 WT. 575 WT.	ETC
6-(FOH)	SOURCE 4 10 DEGREE	750 WT.	ETC
4-(FOH)	SOURCE 4 5 DEGREE	750 WT.	ETC
24	8" FRESNEL	1000 WT.	ALTMAN
8-(FOH)	SOURCE 4 PAR	575 WT.	ETC
60	PAR 64 MFL-OR- WFL	1000 WT.	ALTMAN
14	COLORFORCE 72" LED STRIPS		CHROMA- Q
42	FOCUSING CYCLIGHTS	1000 WT.	ALTMAN
18	SINGLE YOKES (MOUNTING HARDWARE)		
12	3 CELL YOKES (MOUNTING HARDWARE)		
12	PAIRS OF FLOOR TRUNNIONS (MOUNTING HARDWARE)		
16	SPARE BARRELS, 50 DEGREE		
2	SPARE BARRELS, 14 DEGREE		
1	SPARE BARRELS, 36 DEGREE		

FOLLOW SPOTS:

THE FLYNN HAS 2 LYCIAN 1200 LONG THROW FOLLOW SPOTS. THEY ARE LOCATED IN THE BOOTH AT THE REAR OF THE BALCONY. POSITIONS FOR A TOTAL OF 4 FOH FOLLOW SPOTS ARE AVAILABLE.

ANGLES AND THROW DISTANCES:

FIRST FOH CEILING SLOT – 35' THROW/ 30 DEGREE ANGLE
SECOND FOH CEILING SLOT – 42' THROW/50 DEGREE ANGLE
BALCONY RAIL – 76' THROW/ 5 DEGREE ANGLE
BOOTH RAIL TO P.L.-100' THROW/15 DEGREE ANGLE

ACCESSORIES;

18	IRIS FOR SOURCE 4
28	B SIZE PATTERN HOLDER FOR SOURCE 4
28	A SIZE PATTERN HOLDER FOR SOURCE 4
58	TOP HATS FOR SOURCE 4
10	TOP HATS FOR 7 ½" FRAME
23	DONUTS FOR SOURCE 4
18	COLOR EXTENDERS FOR SOURCE 4'S
24	8" BARN DOORS – 4 WAY
51	12" SIDE ARMS
8	10'-6" (1 ½") BOOM PIPE
8	16'-0" (1 ½") BOOM PIPE
10	24" – BOOM BASES
6	SCENERY BUMPERS
16	GROUND MOUNTS
29	16" TWO-FERS
17	24" TWO-FERS
32	STAGE PIN TO EDISON ADAPTERS (16 EACH DIRECTION)
25	MUSIC STAND LIGHTS

THE THEATRE HAS A STOCK OF 12/3 SINGLE RUN CABLE IN LENGTHS FROM 5' TO 125'. THERE IS ALSO A GOOD SELECTION OF 6 CIRCUIT SOCAPEX MULTI CONDUCTOR WITH BREAKOUTS AVAILABLE IN VARIOUS LENGTHS. THERE IS A LIMITED COLOR STOCK IN HOUSE, BUT MOST BRANDS ARE AILABLE LOCALLY. A 20' DRIVEABLE & A 36'STATIC PERSONAL LIFT AND AN ASSORTMENT OF STEP AND STRAIGHT LADDERS ARE ONSITE.

G. – SOUND:

THE FLYNN MAIN STAGE OWNS A GROUND STACKED ADAMSON SPECTRIX LINE ARRAY SYSTEM, WITH A BALCONY FILL, LISTED BELOW. IN ADDITION WE HAVE A CONTRACT WITH AN EXCELLENT LOCAL SOUND VENDOR. PLEASE LET US KNOW OF YOUR NEEDS WELL IN ADVANCE SO THAT WE CAN HAVE WHAT YOU NEED ON HAND PRIOR TO YOUR ARRIVAL.

THE SOUND BOARD AND SNAKE ACCESS AT ROWS V, W ,X IN HOUSE(10'-4" X 5'-6". 68' from front of stage.) AND AT THE BACK OF THE ORCHESTRA SEATING (16' X 6'. 90' from front of stage). YOU WILL LOSE 18 SEATS IF YOU CHOOSE TO USE THE MIX POSITION IN THE SEATS, PLUS ANY OBSTRUCTED. THE REAR OF THE HOUSE MIX POSITION IS NOT BAD AND NO SEATS ARE LOST. IF YOU PLAN ON PULLING ANY SEATS; (SEE MIX POSITION SUPPLEMENT) **PLEASE LET US KNOW IN ADVANCE SO THEY ARE NOT SOLD.**

A PAGING SYSTEM IS AVAILABLE THROUGHOUT THE BACK STAGE AND PERFORMER SUPPORT AREAS. THERE IS ALSO STAGE MONITOR FEED TO ALL DRESSING ROOMS AND LIGHTING BOOTHS.

THE FLYNN IS EQUIPPED WITH AN LOOP HEARING IMPAIRED SYSTEM.

FLYNN MAINSTAGE AUDIO EQUIPMENT:

CONSOLES AND PROCESSING

- 1 Crest HP 8 24x8 mixing console,
- 1 Avid Venue SC-48 x 16 Ethernet and Firewire.
- 1- Midas M32
- 2- XTA DP448 CROSSOVER RUNNING ADAMSON V40 SPEXTRICS PRESETS
- 4 x DBX231 graphic equalizers (handles 8 channels of stage monitors)

- 2 x tc electronic M-ONE XL digital multi-effects processors
- 1 x tc electronic D-TWO digital delay processor
- 1 x DBX 1046 4 channel compressor limiter
- 1 x DBX 1074 4 channel noise gate
- 2 x Shure DFR 11 EQ digital feedback reducers

PLAYBACK

- 2 x Denon DN-C615 CD/MP-3 players
- 1x Tascam MD-350 Mini Disk recorder player
- 1x MacBook Pro w Q lab (shared with Video)

Choose an item.

SPEAKERS

House Left and House Right Mains each consist of:

1 x Adamson Spectrix subwoofer (additional pair subs available)

**6 x Adamson Spectrix line array boxes
ground stacked on SUBS.**

Balcony cluster consists of:

**2 x Adamson Spectrix line array boxes
dead hung downstage of the proscenium**

Downstage fills

4 x QSC I82H

Stage monitors:

10 x JBL SRX 712M

Amp Rack

4 x QSC PLX1804 (stage monitors)

12 x Powersoft K2(mains, balcony, front fills)

2 x XTA DPA448 system processors (mains, balcony, front fills)

MIC BOX

Mics

7 x Shure SM58

2x Shure SM58s

6 x Shure SM57

3 x Shure SM81

1 x Shure Beta52

2 x CAD E-100

2 x AKG 414

4 x Crown PCC-160

8 x Shure MX202-hanging choir mics

DI boxes

3 x Countryman Type85 Active

4 x ProCo CB-1 Passive

2 x Whirlwind PCDI stereo

2 Proco AV-1

Wireless

4 x Shure SLX4 receivers

4 x Shure SLX2 handheld transmitters w/SM58 capsules

2 x Shure SLX1 backpack transmitters w/WL185 cardioid lavalier mics

MIC STANDS

14 x K&M tripod tall boom mic stands

10 x Atlas Sound round base short boom mic stands

1 x Atlas Sound round base xtra short kick drum boom mic stand

4 x Atlas Sound round base tall strait mic stands

4 x Round Base desk style mic stands

4 x Ultimate Support stands for JBL monitors

INTERCOM:

A CLEAR-COM INTERCOM SYSTEM IS AVAILABLE IN THE THEATRE.

HEADSETS:	12 CLEAR-COM SINGLES AND BELT PACKS 4 TEMPEST 900 WIRELESS
CONNECTS:	FOLLOW SPOTS (2) LIGHT BOARD (1) SOUND MIX LOCATIONS (2) CHORUS DRESSING ROOMS (2) STAR DRESSING ROOMS (2) PROJECTION ROOM (1) DIMMER ROOM (1) FLY FLOOR (1) PIN RAIL US/DS (1) HOUSE SEATING ROW K UNDER SEAT 2 (1) FOH CATWALK (1) STAGE LEFT (1) STAGE RIGHT (1)

H. VIDEO: VIDEO & PROJECTION EQUIPMENT

THE FLYNN CENTER HAS AN INVENTORY OF FRONT AND REAR SCREEN VIDEO PROJECTORS AND VIDEO PRESENTATION EQUIPMENT. CALL FLYNN PRODUCTION REPRESENTATIVES FOR PRICING AND PACKAGES.

**BARCO RLM W14- 14.5K LUMENS PROJECTOR-IN BOOTH
LENSES: 6.9-10.3, 2.8-4.5 .**

PANASONIC PT-LB80U 2K LCD PROJECTOR-ON STAGE

LEA. 38' WIDE X 21' .33 HIGH HD SCREEN (16:9 FORMAT) FRONT PROJECTION SCREEN

**LEA. 14' WIDE X 10' .5 HIGH SCREEN (3:4 FORMAT FRONT AND REAR PROJECTION) W/
FULL DRESS KIT**

2 DENON DN-V210 DVD PLAYERS

ROLAND V-800 4D MULTI FORMAT SWITCHER

MAC BOOK PRO W/ Q LAB

MISC. CABLES AND HARDWARE

I.- DRESSING ROOMS AND PERFORMER SUPPORT:

DRESSING ROOMS:

THERE ARE TWO "STAR" OR ONE PERSON DRESSING ROOMS WITH PRIVATE FULL BATHS, LOCATED ONE FLIGHT BELOW STAGE LEVEL.

A SINGLE PERSON HANDICAPPED ACCESSIBLE DRESSING ROOM WITH FULL BATH IS AVAILABLE STAGE LEFT AT STAGE LEVEL.

THERE ARE TWO "CHORUS" OR 20 PERSON DRESSING ROOMS. THESE ARE LOCATED TWO FLIGHTS BELOW STAGE LEVEL AND SHARE ONE LAVATORY. SHOWER AND EXTRA BATHROOM FACILITIES ARE LOCATED ONE FLIGHT UP ON MID LEVEL.

ALL DRESSING ROOMS CAN BE LOCKED.

THERE ARE MAKEUP MIRRORS WITH INCANDESCENT LIGHTING AND COSTUME RACKS AVAILABLE IN ALL DRESSING ROOMS.

A GREEN ROOM LOUNGE AREA WITH A KITCHENETTE/ DINING AREA, EQUITY COT, AND PHONES ARE AVAILABLE ON THE MID LEVEL.

BOTTLED SPRING WATER AND AN ICE MACHINE ARE AVAILABLE ON SITE.

ZONE OR FULL THEATRE AIR CONDITIONING IS AVAILABLE AS DESCRIBED IN THE FLYNN CENTER USAGE POLICIES DOCUMENT.

THE FLYNN THEATER IS A SMOKE FREE ENVIRONMENT AND NO SMOKING IS PERMITTED ANYWHERE IN THE BUILDING

WARDROBE:

THERE IS A LAUNDRY ROOM WITH 2- WASHER, 2- DRYER, 1- STEAMER, 2- IRONS AND 2- IRONING BOARDS AVAILABLE IN THE WARDROBE ROOM ON THE LOWER LEVEL BY THE CHORUS DRESSING ROOMS.

THERE IS NO ELEVATOR TO ACCESS LOWER LEVELS BUT MID LEVEL CAN BE ACCESSED FROM THE STREET. WARDROBE BOXES CAN BE BROUGHT IN BY THIS MANNER OR LOWERED TO MID LEVEL ON THE ORCHESTRA PIT LIFT. PORTABLE WARDROBE RACKS ARE AVAILABLE UPON REQUEST.

J. – LOCAL SERVICES.

Hotels

Tell them you are performing at the Flynn for best rate!!!

- Anchorage Inn 802/863.7000
- Comfort Inn 802/863.5541
- Best Western – Windjammer Inn 802/863-1125
- Courtyard Marriot Burl Harbor 802/864-4700
- DoubleTree Hotel 802/658.0250
- Green Mountain Suites 802/860.1212
- Hilton Hotel 802/658.6500
- Holiday Inn 802/863-6363
- Hampton Inn 802/655.6177
- University/Comfort Inn 802/863.5541

Emergency Medical Assistance

- Fletcher Allen Heath Care 802/847.0000
MCHV Campus, 111 Colchester Ave., Burlington
- Urgent Care of Champlain Valley
7 Fayette Road, S. Burlington 802/865.3655

Non-Emergency Medical Assistance

- Community Health Center (local walk-in clinic)
802/864.6309

Physical Therapy

- On Track Physical Therapy 802/865-2226

Orthopedic Surgeons

- Associates in Orthopedic Surgery 802/862.3983
6 San Remo Drive, So. Burlington

Dental Assistance

- Vermont Dental Care 802/655.2385
Champlain Mill, Winooski, top floor

Chiropractic Care

- Dr. Laura Ramirez 802/862.6488
So. Union Street, Burlington

Pharmacies

- RiteAid Pharmacy 802/862.1562
158 Cherry Street, Burlington
- Lakeside Pharmacy 802/862.1491
242 Pearl Street, Burlington
- Health Center Pharmacy
UHC Campus 802/847.3784
MCHV Campus 802/847.2821
24hr Message/Refill Line 802/847.5520

Health Clubs

- YMCA (passes available) 802/862.9622
- Stephen & Burns 802/651.8773

Courier Services

- Lightning Couriers 802/864.4818
- Priority Express 802/862.2828

Banking Services

- TD Bank, 111 Main St, Burl. 802/658.1010
- Merchants Bank, College St., Burl. 802/865.1898
- Chittenden Bank, Bank St., Burl. 802/863.8900
- Citizens Bank, College St, Burl 802/658.9681

Catering Services

- Encore Catering 802/863.6937
- Kountry Kart Deli 802/864.4408

Local Theatrical Supplier

- Production Advantage 802/651.6915
- Dark Star Lighting 802/482-4802

Hardware/Lumberyard

- Gregory Supply 802/863.3428
315 Pine St., Burlington

Rental Vehicles

- Majestic Car Rental 802/860.7300
- Hertz Rental 802/864.7409
- Ryder Truck Rental 802/864.6580

Taxi Services

- Yellow Checker Taxi Svc 802/862.3300
- Benways 802/862.1010
- MORF 802/864.5588

Laundry Services

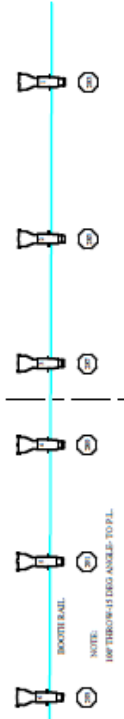
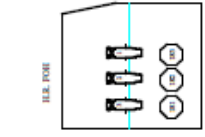
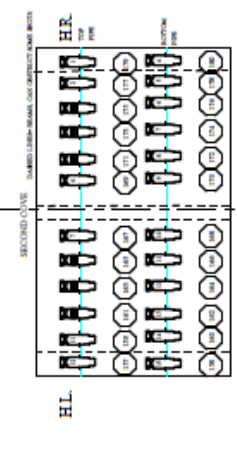
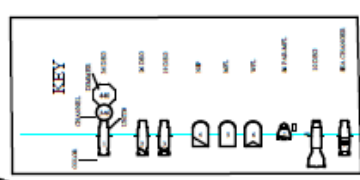
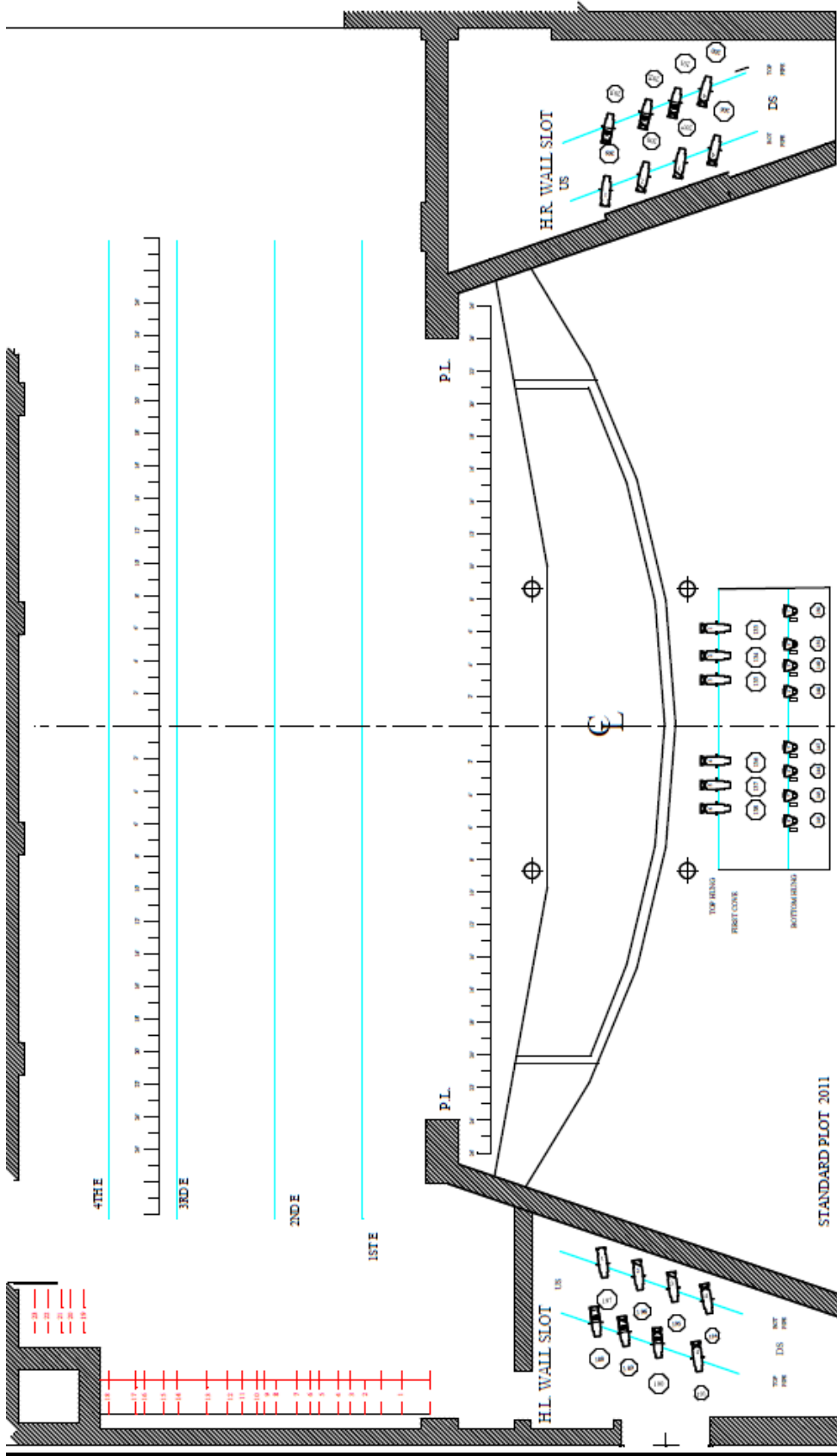
- Gaslight, 383 College Street 802/864.9712
- Greens, 10 Dorset St., So. Burl. 802/864.7381

Massage Therapists

- Larry Bennett Massage 802/863-4021
- Polly Menendez 802/859.0788
(Swedish, P.T.)
- Stephen & Burns 802/865.4766
- Vermont Institute of Massage 802/862.1111
(have multiple practitioners available)

Salons & Stylists

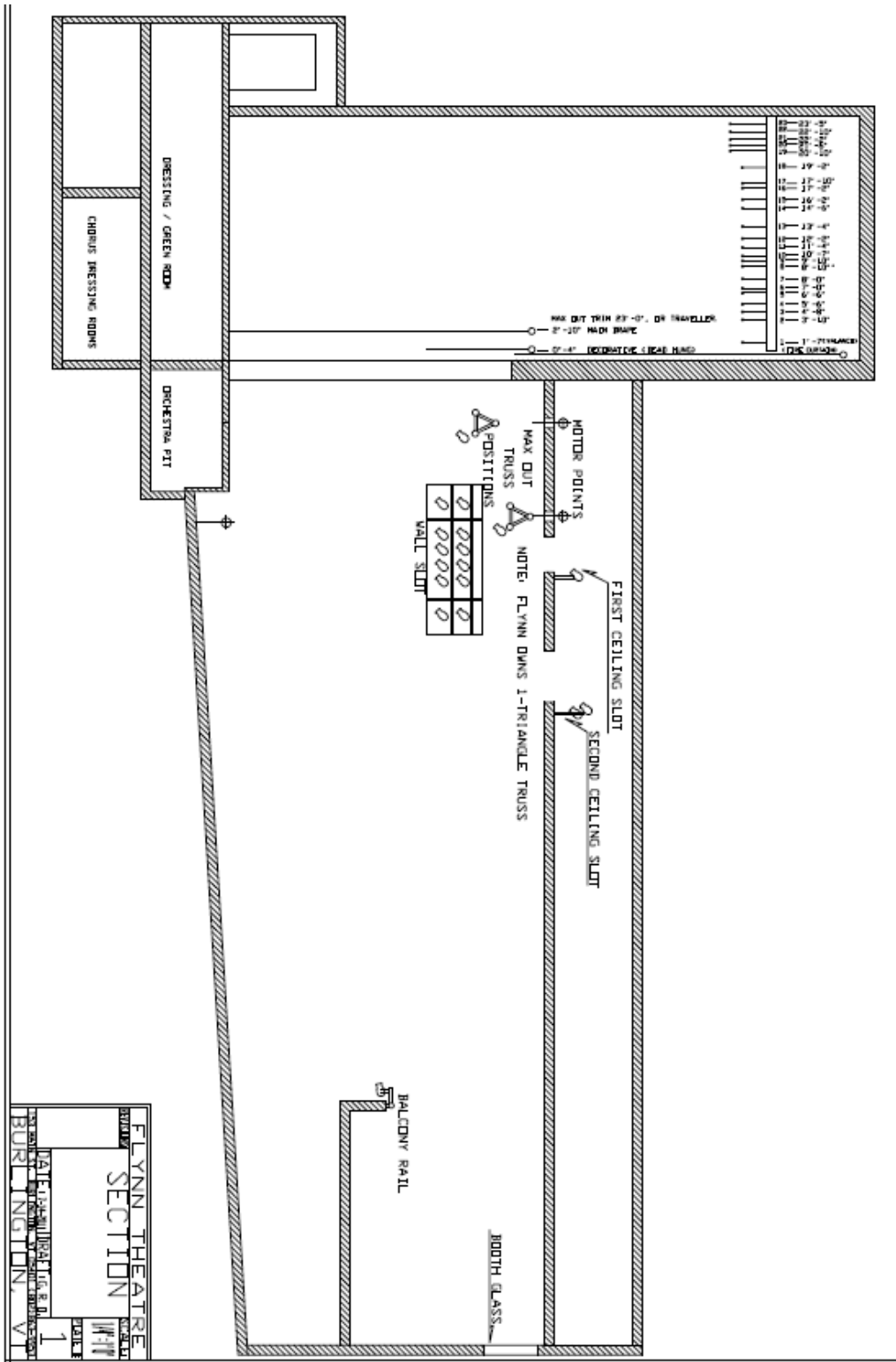
- Stephen & Burns 802/865.4766
- Tonic 802/865.2817
- Gentleman's Top Option Salon 802/863.3969
- Bimini Bills 802/658.0264
- Indigo 802/865.2212
- Jac Huntley – color only 802/862-6762



SHOOTER'S AID
 NOTES:
 1. HP THROUGH-ASTRO ANGLES TO P.L.

STANDARD PLOT 2011

K-2. – FLYNN CENTER (THEATER SECTION)



K-4. FLYNN CENTER (SEATING MANIFEST)

L.- BURLINGTON CITY MAP/ DIRECTIONS TO FLYNN

FROM I-89 NORTH OR SOUTH: TAKE EXIT 14W, THE OFF RAMP TAKES YOU RIGHT OUT TO MAIN STREET. GO UP THE HILL TOWARDS THE UNIVERSITY THEN DOWN THE HILL TOWARDS LAKE CHAMPLAIN. THE FLYNN CENTER WILL BE ON THE LEFT AFTER CHURCH STREET.

FROM VERMONT ROUTE 7: (FROM POINTS SOUTH) FOLLOW RTE. 7 INTO BURLINGTON (BEAR LEFT AT ALL FORKS) RTE. 7 BECOMES ST. PAUL STREET. TURN RIGHT AT THE INTERSECTION OF ST. PAUL AND MAIN STREET. THE FLYNN WILL BE ON YOUR RIGHT. THE LOADING DOCK: IS AROUND THE BLOCK ON THE SIDE OF THE BUILDING. TURN SOUTH ONTO CHURCH STREET. THERE WILL BE A SMALL PARKING LOT ON THE RIGHT AND THE DOCK WILL BE AT THE REAR OF IT.

